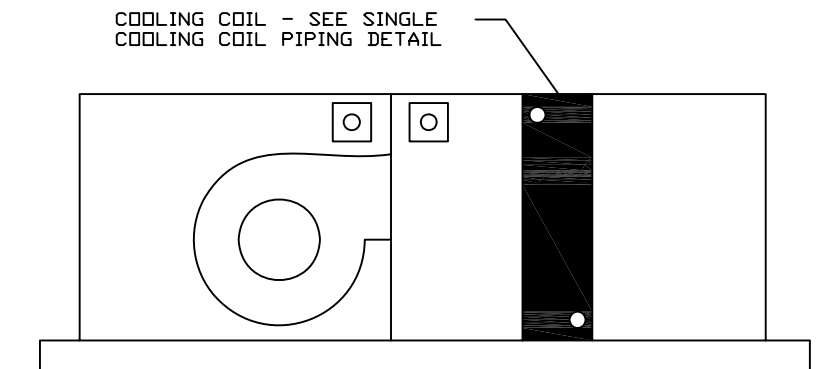
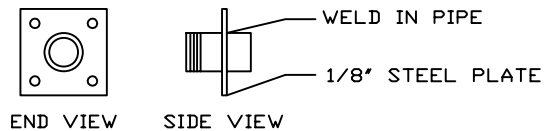


DRAW THROUGH AIR HANDLER



BLOW THROUGH AIR HANDLER



DUCT CONNECTOR

NOTES:

1. DUCT CONNECTORS TO HAVE SCREW CAPS. CONNECTOR PIPE SAME SIZE AS CHILLED WATER PIPE OR 2" MINIMUM, 4" MAXIMUM.
2. DUCT CONNECTORS SUPPLIED BY PIPING CONTRACTOR, INSTALLED BY SHEET METAL CONTRACTOR. INSTALL ONE CONNECTOR ON THE DISCHARGE SIDE OF THE SUPPLY FAN AND ONE CONNECTOR ON THE INLET SIDE OF THE SUPPLY FAN.